

# morbidelli cx200

flexible drilling centre



# morbidelli cx200

state of the art technology with a **limited investment**

The ideal solution for batch 1 machining. This compact and fast numerical control drilling centre allows for drilling on 5 sides of the panel, blade cutting and routing, thanks to two heads with independent Y axis, that operate contemporaneously on the same panel.

## STATE OF THE ART TECHNOLOGY

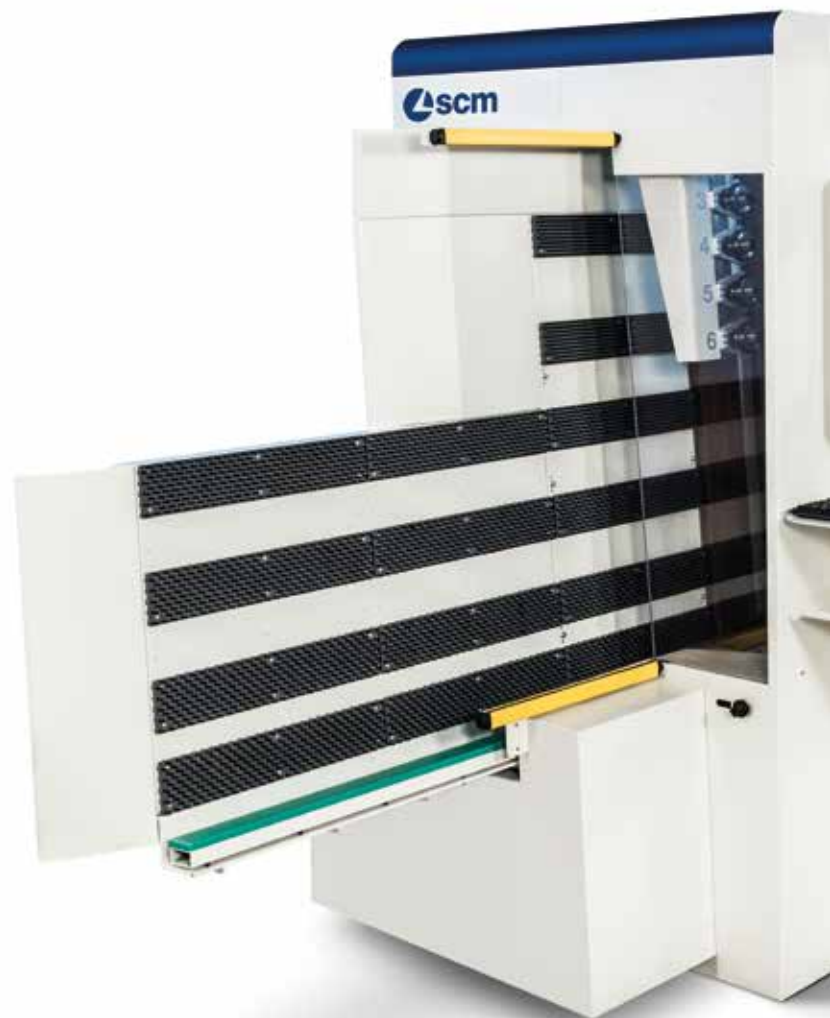
in less than 10 square metres.

## DRILLING ACCURACY

during machining the new RO.AX technology (Rotoaxial spindle technology), with the highest performing spindle on the market, featuring rotation speeds up to 8000 RPM.

## HIGH PRODUCTIVITY LEVELS

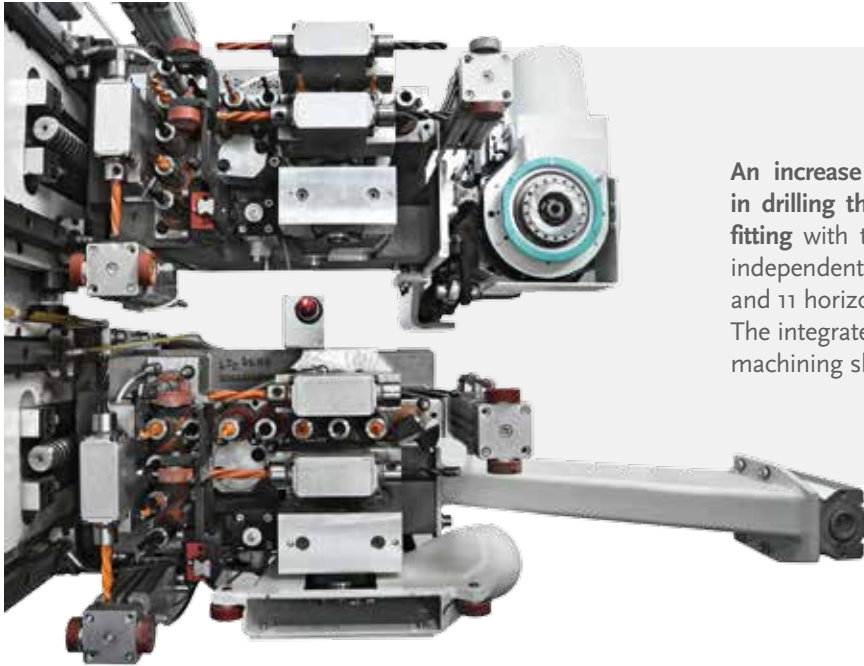
machining cycles of up to 600 pieces/shift and no operator intervention required to re-tool the machine between machining batches.





# morbidelli cx200

precise and powerful drilling performance



An increase in productivity of up to 60% in drilling the structure and in drilling the fitting with the 2 ultra-stiff machining, with independent Y axes, for a total of 24 vertical and 11 horizontal spindles. The integrated blade along X can be used for machining slots and grooves.



**Unparalleled drilling quality:** with rotation speed adjustment up to 8000 RPM and with specific pressers.

**Low maintenance:** only after over 1000 hours of operation, thanks to the use of spindles with RO.AX technology (Rotoaxial spindle technology).



**Highly precise and fast movement:** all the machining units are driven by brushless motors and slide on rack and pinion systems along the X-Y axis and on recirculating ball screw along axis Z.





**Highly functional and reliable:** the 6.6 kW electrospindle with HSK63-F taper and rotation speed up to 24,000 RPM, is the ideal solution for local routing operations on various types of panels. Positioned on the upper head it can be used for blind and through routing.

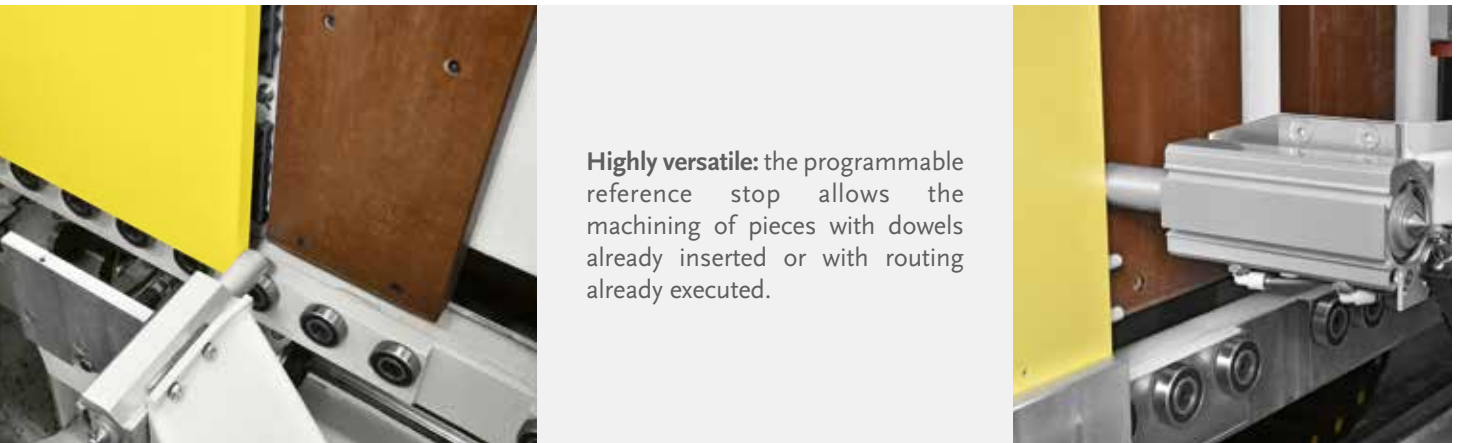
**Flexible:** the 6-position tool changer ensures that all the tools necessary to complete all the machining operations of the piece of furniture are available.



**Ergonomic:** the lateral supports allow operators to comfortably load and unload panels up to 3050 mm.

# morbidelli cx200

flexible and versatile productivity

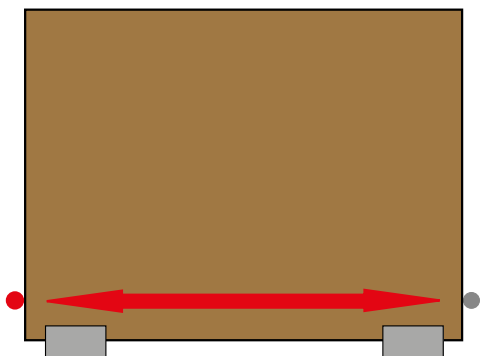


**Elimination of dead times:** the barcode reader scans the label associated to the panel to automatically load the machining program.

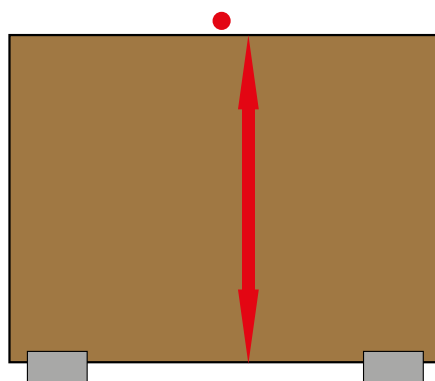




**Maximum productivity:** no operator intervention required on the work table to re-tool the machine between machining batches.



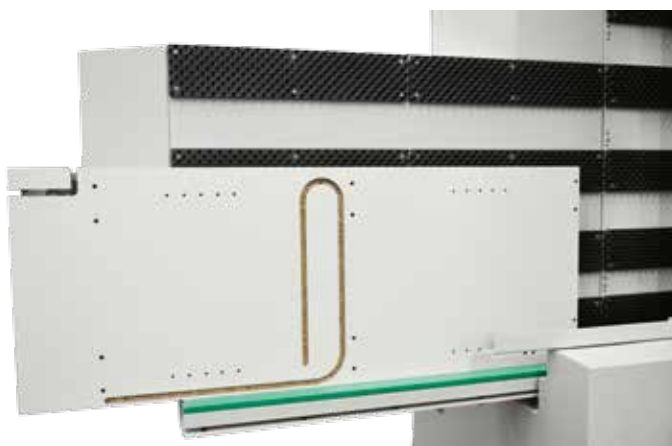
Programs can be executed with the right and left reference or with mixed reference with the **rear sensor**.



**No panel loading errors with the congruence sensor Y**, that checks that the size of the panel loaded matches the size programmed.

**Possibility of executing local routing** along the whole panel:

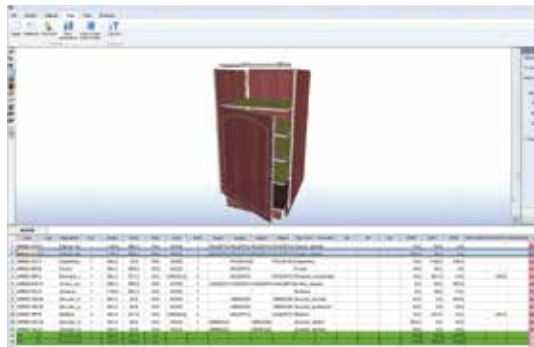
- **machining with the blade** along the whole dimension X of the panel
- **shavings** of the four edges of the panel
- machining of panels up to **H 1300mm**
- machining of panels with **delicate surfaces**
- **Toe-Kick** machinings



# morbidelli cx200

simple and easy to use software

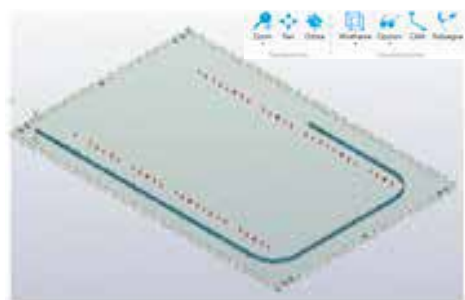
## MAESTRO UNIQUE CREATIVITY



### CAD/CAM programming software to design every production process

Developed in the Windows® environment it makes programming extremely easy with an advanced sketching environment which is easy to use and intuitive. It provides users with all the tools needed to design components and their layout on the work table, manage the tools and the relative machining operations in a fully integrated and high performance context.

## MAESTRO CABINET UNIQUE FURNITURE DESIGN



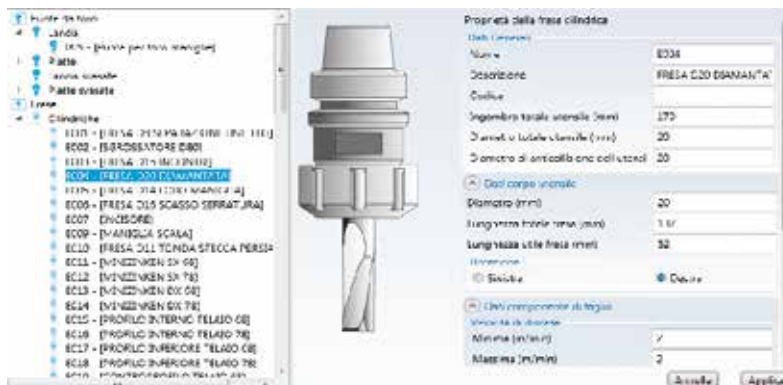
Includes an extensive library of the most popular furniture models and a simple wizard that will guide the user in programming and customising the model based on their requirements.



The application has been designed specifically for the home and office furniture sector, to design furniture and for the step-by-step programming of cabinets.

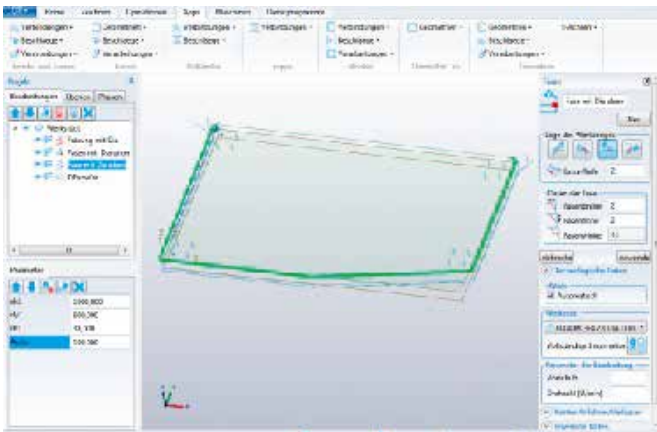
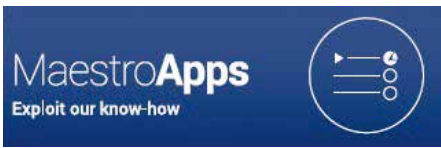
### Tool Manager

The tools can be selected directly and simply with an easy to understand graphic representation.





# Time saving design



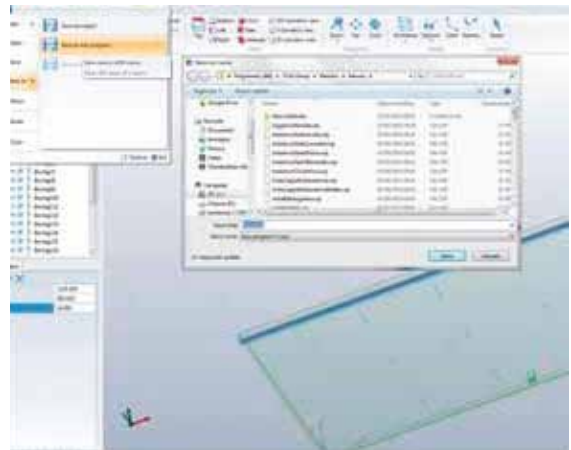
**Maestro APPS** is a library of programming functions which are available at a touch and very simple to use. Developed by the SCM, they are designed to create components, furniture, etc. Users will have free access to SCM technical know-how with a simple click.

## MACRO: The fastest

The programs can be quickly converted in macro-machining operations and archived in a library for future use.

## TECHNOLOGY: Learning from experience

Fast programming of common recurring machining operations and generation of sub-programs that can be applied to each new geometry.

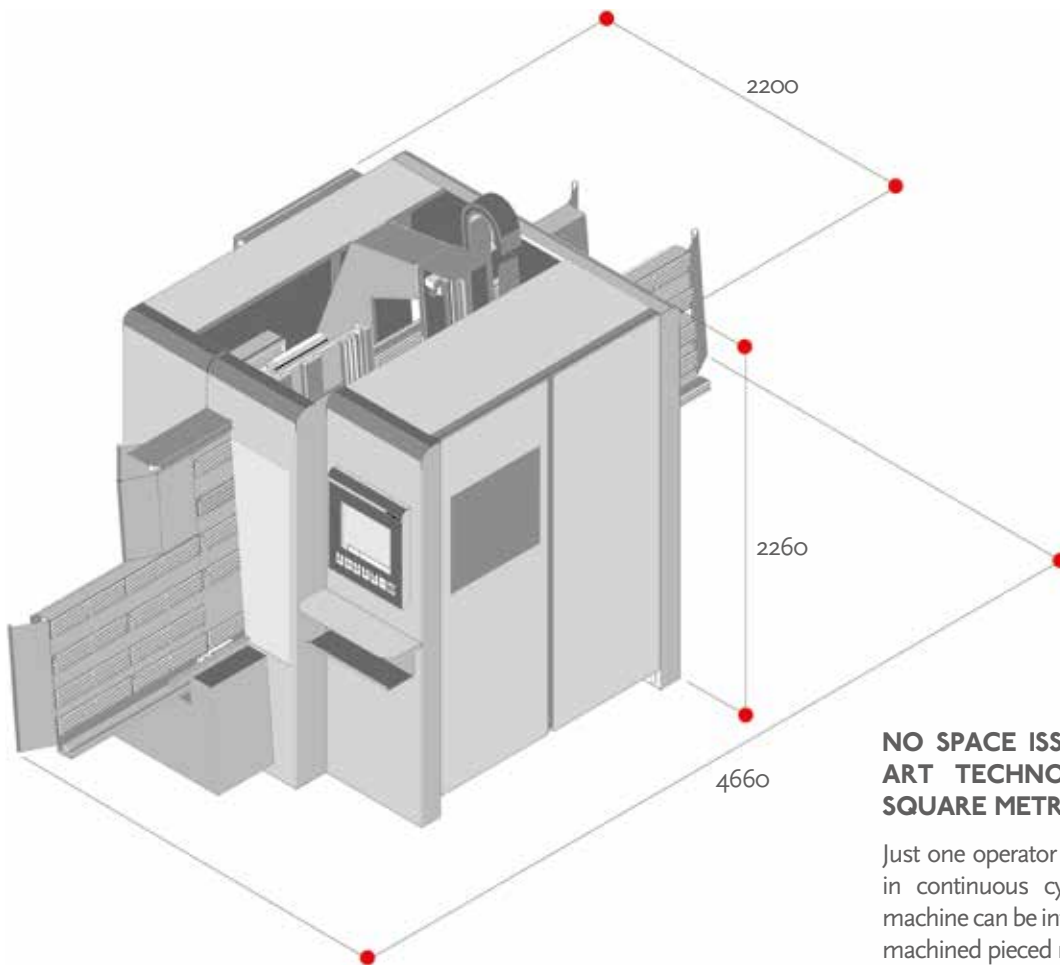


The 19" touchscreen monitor lets users easily manage all the machine's functions. The ethernet connection can be used to connect the machine to the company's network.



# morbidelli cx200

state of the art technology in a small package



**NO SPACE ISSUES, STATE OF THE ART TECHNOLOGY IN ONLY 10 SQUARE METRES**

Just one operator can manage the machine in continuous cycle without breaks. The machine can be integrated with an automatic machined pieced return system.

## MORBIDELLI CX200

### technical data

Panel length	mm	200 - 3050
Panel width	mm	50 - 1300
Panel thickness	mm	8 - 95
Vertical spindles	n.	24
Horizontal spindle in X	n.	8
Horizontal spindle in Y	n.	3
Blade diameter in X	mm	125
Electrospindle power (optional)	kW	6,6
Electrospindle max speed (optional)	rpm	24000
Tools magazine (optional)	positions	6



### REDUCED CONSUMPTIONS = REDUCED COSTS

SavEnergy uses **power only when required**, by operating the devices only when strictly necessary. The machine automatically switches to stand-by when there are no panels to machine. Yearly saving of up to 10% (opt.).

# THE STRONGEST WOOD TECHNOLOGIES ARE IN OUR DNA

## SCM. A HERITAGE OF SKILLS IN A UNIQUE BRAND

Over 65 years of success gives SCM the centre stage in woodworking technology. This heritage results from bringing together the best know-how in machining and systems for wood-based manufacturing. SCM is present all over the world, brought to you by the widest distribution network in the industry.

65 years history

3 main production sites in Italy

300.000 square metres of production space

17.000 machines manufactured per year

90% export

20 foreign branches

350 agents and dealers

500 support technicians

500 registered patents

In SCM's DNA also strength and solidity of a great Group. The SCM Group is a world leader, manufacturing industrial equipment and components for machining the widest range of materials.

## SCM GROUP, A HIGHLY SKILLED TEAM EXPERT IN INDUSTRIAL MACHINES AND COMPONENTS

### INDUSTRIAL MACHINERY

Stand-alone machines, integrated systems and services dedicated to processing a wide range of materials.



WOODWORKING TECHNOLOGIES



TECHNOLOGIES FOR PROCESSING COMPOSITE MATERIALS, ALUMINIUM, PLASTIC, GLASS, STONE, METAL

### INDUSTRIAL COMPONENTS

Technological components for the Group's machines and systems, for those of third-parties and the machinery industry.



SPINDLES AND TECHNOLOGICAL COMPONENTS



ELECTRIC PANELS



METALWORK



CAST IRON



The technical data can vary according to the requested machine composition. In this catalogue, machines are shown with options. The company reserves the right to modify technical specifications without prior notice; the modifications do not influence the safety foreseen by the CE Norms.



is more



**SCM GROUP SPA**

via Casale 450 - 47826 Villa Verucchio, Rimini - Italy  
tel. +39 0541 674111 - fax +39 0541 674274  
morbidelli@scmgroup.com  
www.scmwood.com



00L0367234A